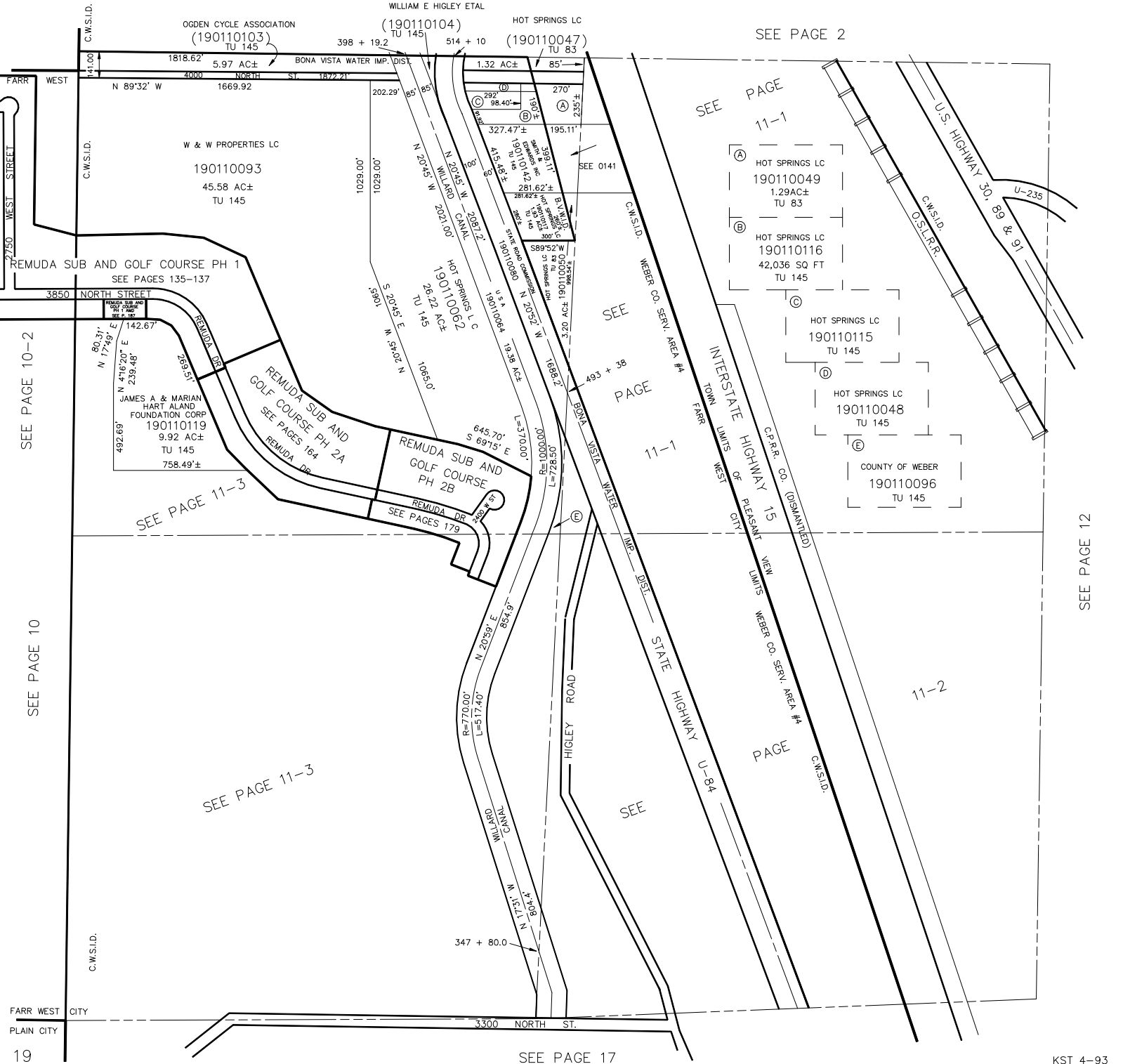


SECTION 23, T.7N., R.2W., S.L.B. & M.

TOWN OF PLEASANT VIEW & FARR WEST CITY

TAXING UNITS: 83, 145

SCALE 1" = 400'



SEE PAGE 2

SEE PAGE 11-1

(A) HOT SPRINGS LC
190110049
1.29 AC±
TU 83

(B) HOT SPRINGS LC
190110116
42,036 SQ FT
TU 145

(C) HOT SPRINGS LC
190110115
TU 145

(D) HOT SPRINGS LC
190110048
TU 145

(E) COUNTY OF WEBER
190110096
TU 145

SEE PAGE 10-2

SEE PAGE 10

SEE PAGE 11-3

SEE PAGE 11-3

SEE PAGE 11-1

SEE PAGE 12

FARR WEST CITY
PLAIN CITY

SEE PAGE 17